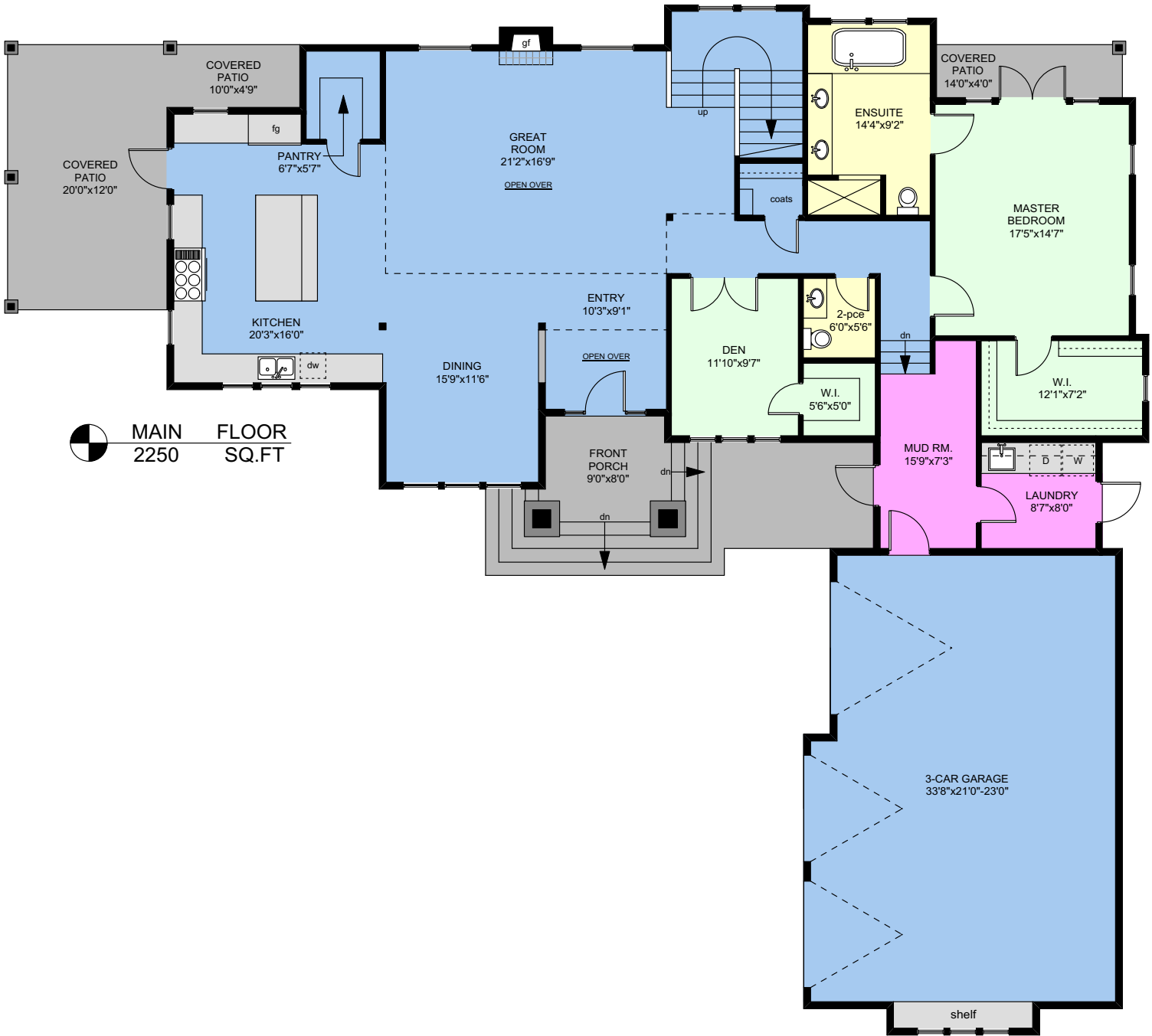

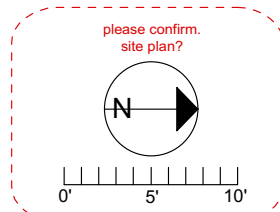


# 2951 PHYLLIS STREET




**MAIN FLOOR**  
 2250 SQ.FT

	FINISHED SQ. FT.	UNFINISHED SQ. FT.	TOTAL SQ. FT.
MAIN	2250	0	2250
UPPER	1738	0	1738
TOTAL	3988	0	3988
GARAGE	0	818	818
PATIOS	0	344	344
PORCH	0	72	72



**PREPARED FOR THE EXCLUSIVE USE OF  
CARWOOD HOMES & DEVELOPMENT**

MEASURED ON: from plans  
 DRAWING FILE: 15092fm

**Tafe Measure** VICTORIA, B.C.  
 Ph. 883.8894  
 www.tafemeasure.com

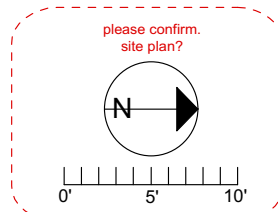
NOTE: This floor plan is provided by Carwood Homes & Development as a convenient reference only, and is not to be relied upon as accurate. Prospective Buyers must satisfy themselves not only of the actual measurements, but also to the status of any finished space shown on this floor plan, specifically in relation to minimum ceiling height for habitable rooms required by the BC Building Code, allowable finished floor area in relation to current zoning, and determination if space was developed with necessary municipal permits.

# 2951 PHYLLIS STREET



UPPER FLOOR  
1738 SQ.FT

	FINISHED SQ. FT.	UNFINISHED SQ. FT.	TOTAL SQ. FT.
MAIN	2250	0	2250
UPPER	1738	0	1738
TOTAL	3988	0	3988
GARAGE	0	818	818
PATIOS	0	344	344
PORCH	0	72	72



PREPARED FOR THE EXCLUSIVE USE OF  
CARWOOD HOMES & DEVELOPMENT

MEASURED ON: from plans  
DRAWING FILE: 15092fm

**Tafe Measure** VICTORIA, B.C.  
Ph. 883.8894  
www.tafemeasure.com

NOTE: This floor plan is provided by Carwood Homes & Development as a convenient reference only, and is not to be relied upon as accurate. Prospective Buyers must satisfy themselves not only of the actual measurements, but also to the status of any finished space shown on this floor plan, specifically in relation to minimum ceiling height for habitable rooms required by the BC Building Code, allowable finished floor area in relation to current zoning, and determination if space was developed with necessary municipal permits.