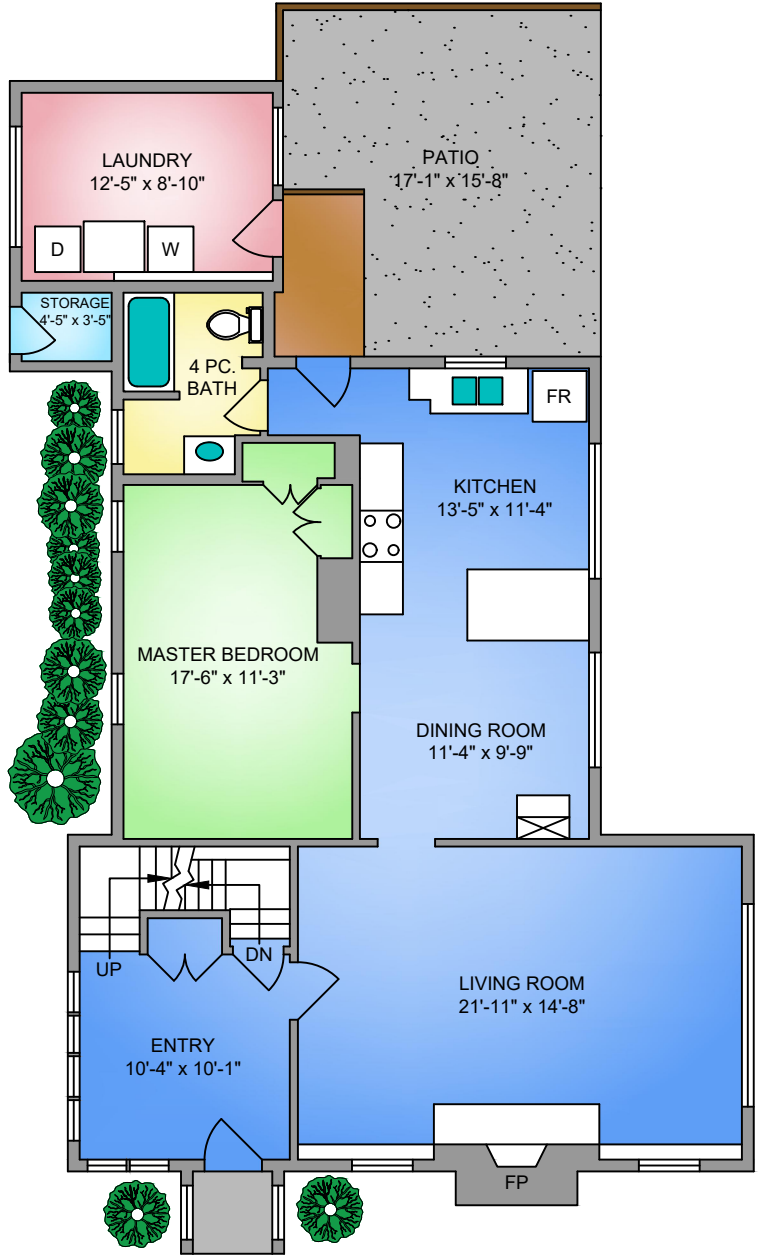
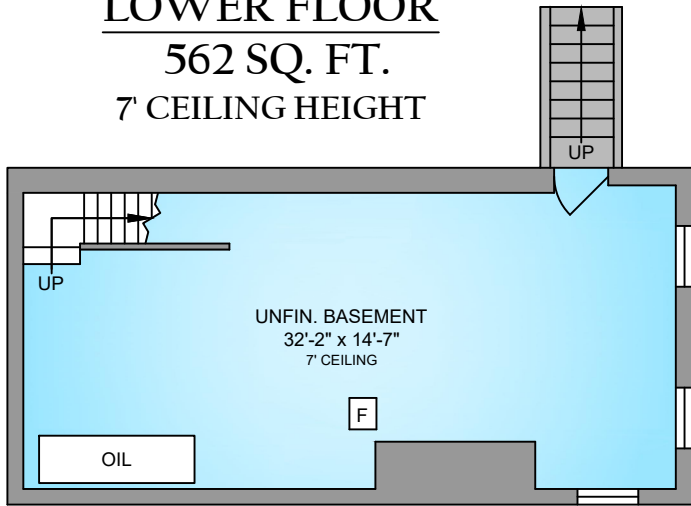
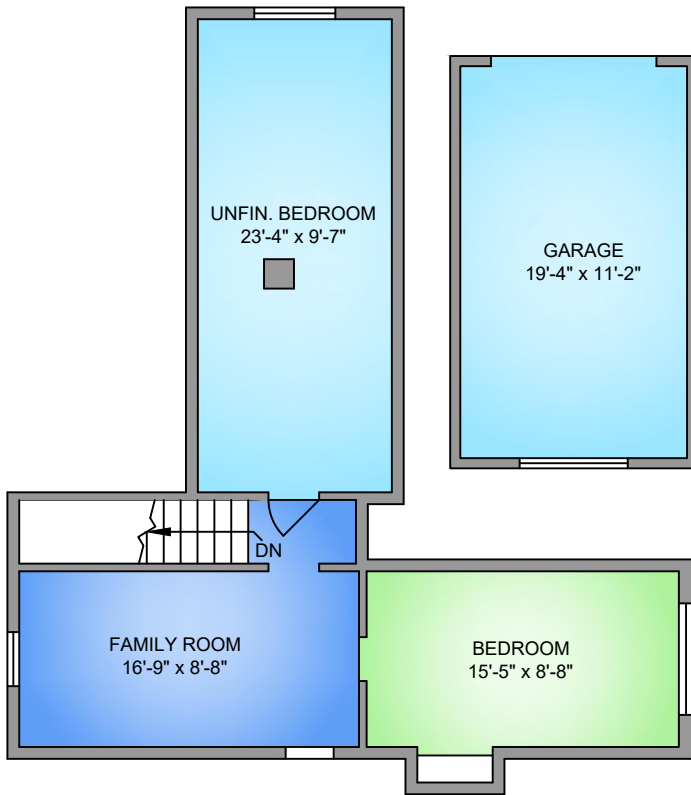


**MAIN FLOOR**  
 1297 SQ. FT.  
 8' CEILING HEIGHT

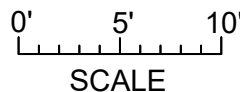
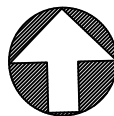
**LOWER FLOOR**  
 562 SQ. FT.  
 7' CEILING HEIGHT



**UPPER FLOOR**  
 376 SQ. FT.  
 7' to 3'-5" VAULTED CEILING HEIGHT



NORTH



5651 PATRICIA BAY HIGHWAY SEPTEMBER 8, 2017				
PREPARED FOR THE EXCLUSIVE USE OF CHACE WHITSON PLANS MAY NOT BE 100% ACCURATE. IF CRITICAL BUYER TO VERIFY.				
FLOOR	AREA (SQ. FT.)			
	FINISHED	UNFINISHED	GARAGE	DECK / PATIO
MAIN	1297	-	248	235
UPPER	376	255	-	-
LOWER	-	562	-	-
TOTAL	1673	817	248	235